

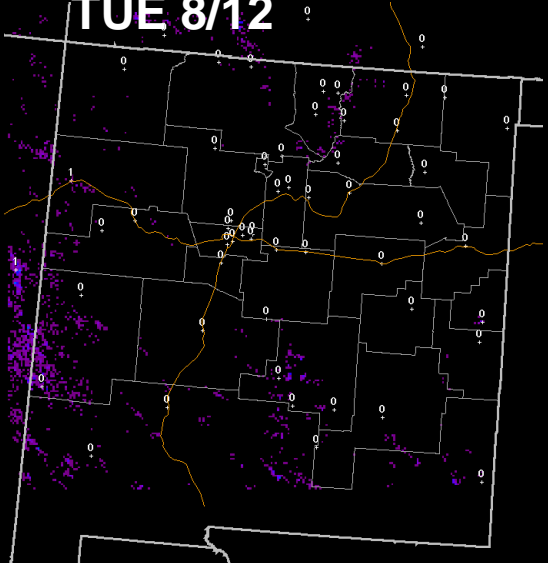
Weekly Weather Briefing

“Potentially Wet Wed-Fri”

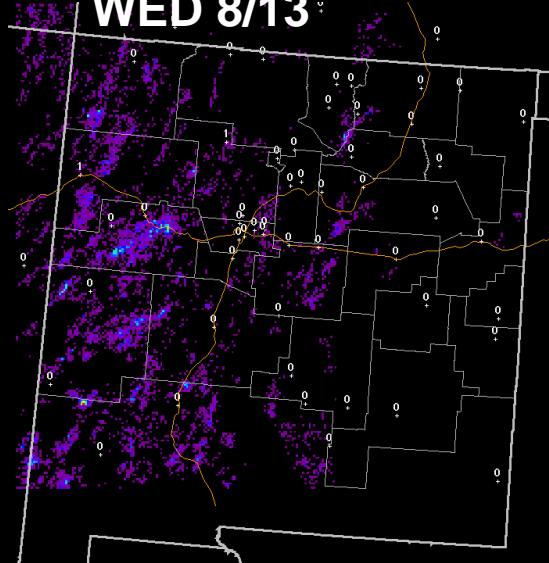
NWS Albuquerque
August 18, 2014

Last Week's Lightning Trends

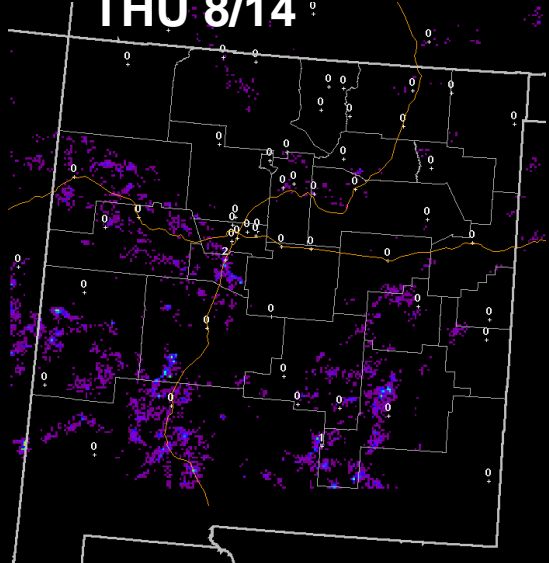
TUE 8/12



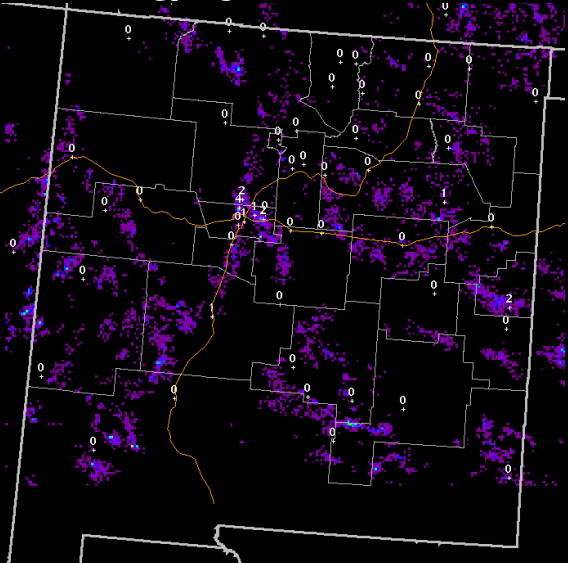
WED 8/13



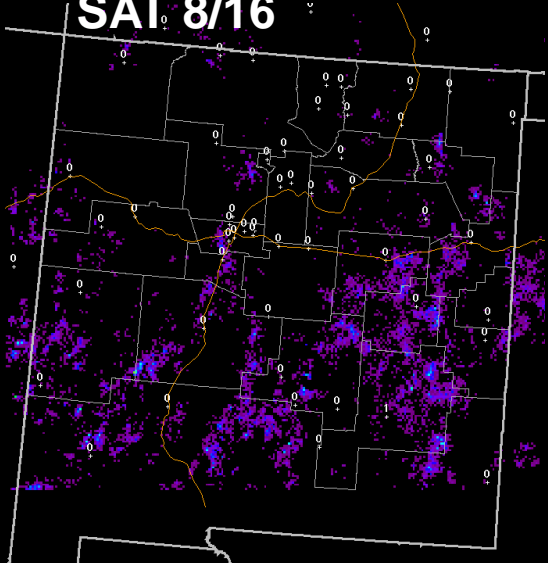
THU 8/14



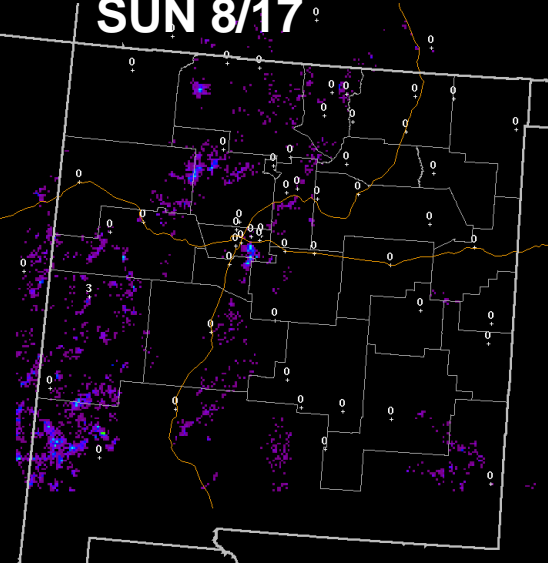
FRI 8/15



SAT 8/16

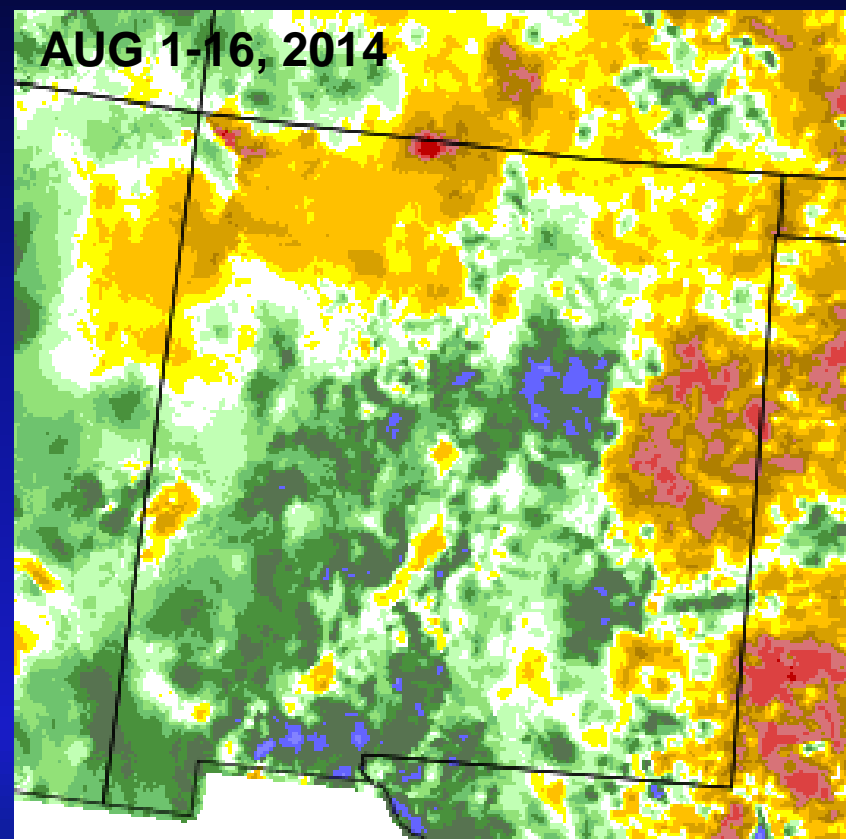
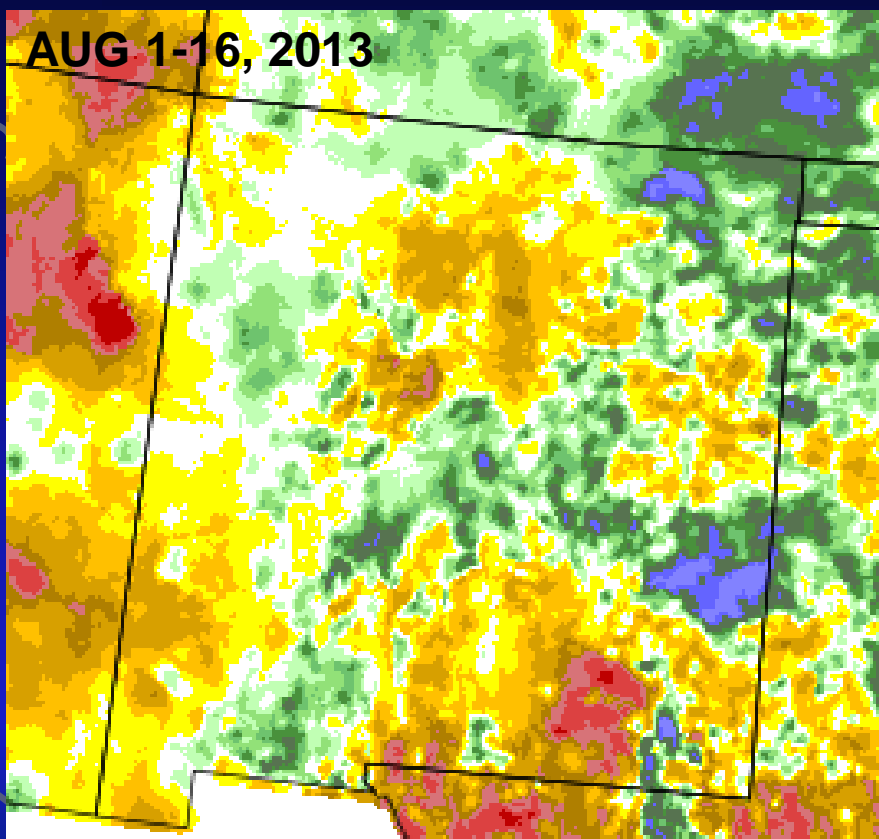
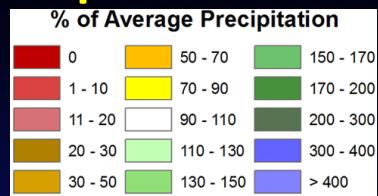


SUN 8/17





August 1-16 Precipitation Anomaly: 2013 VS. 2014



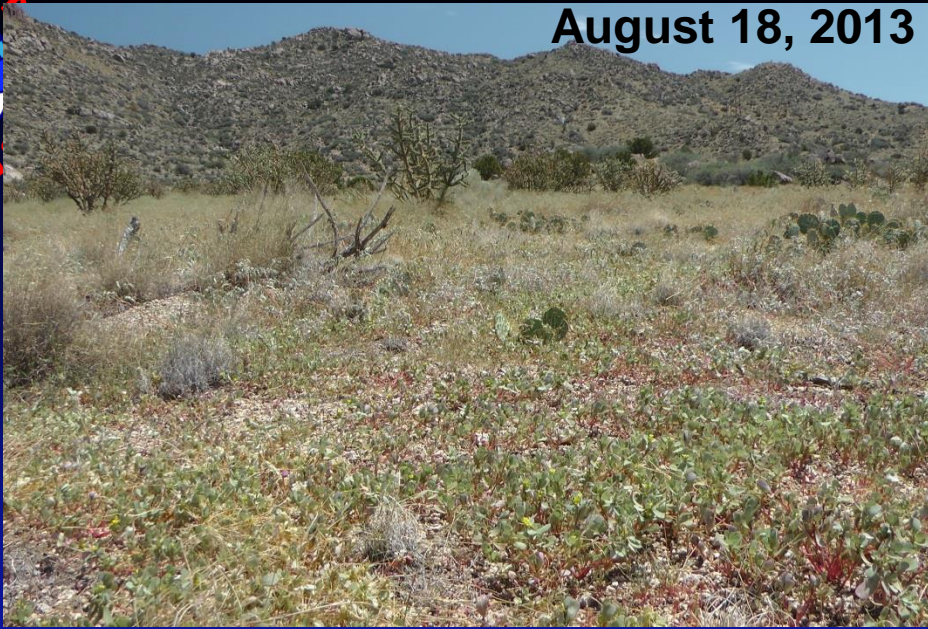
Weekly Weather Briefing

Preliminary data courtesy of the PRISM Climate Group.



Weekly Weather Briefing

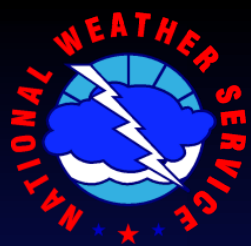
August 18, 2013



August 16, 2014

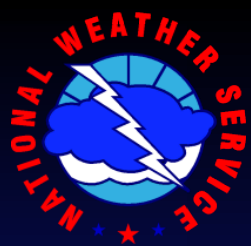


ABQ Foothills



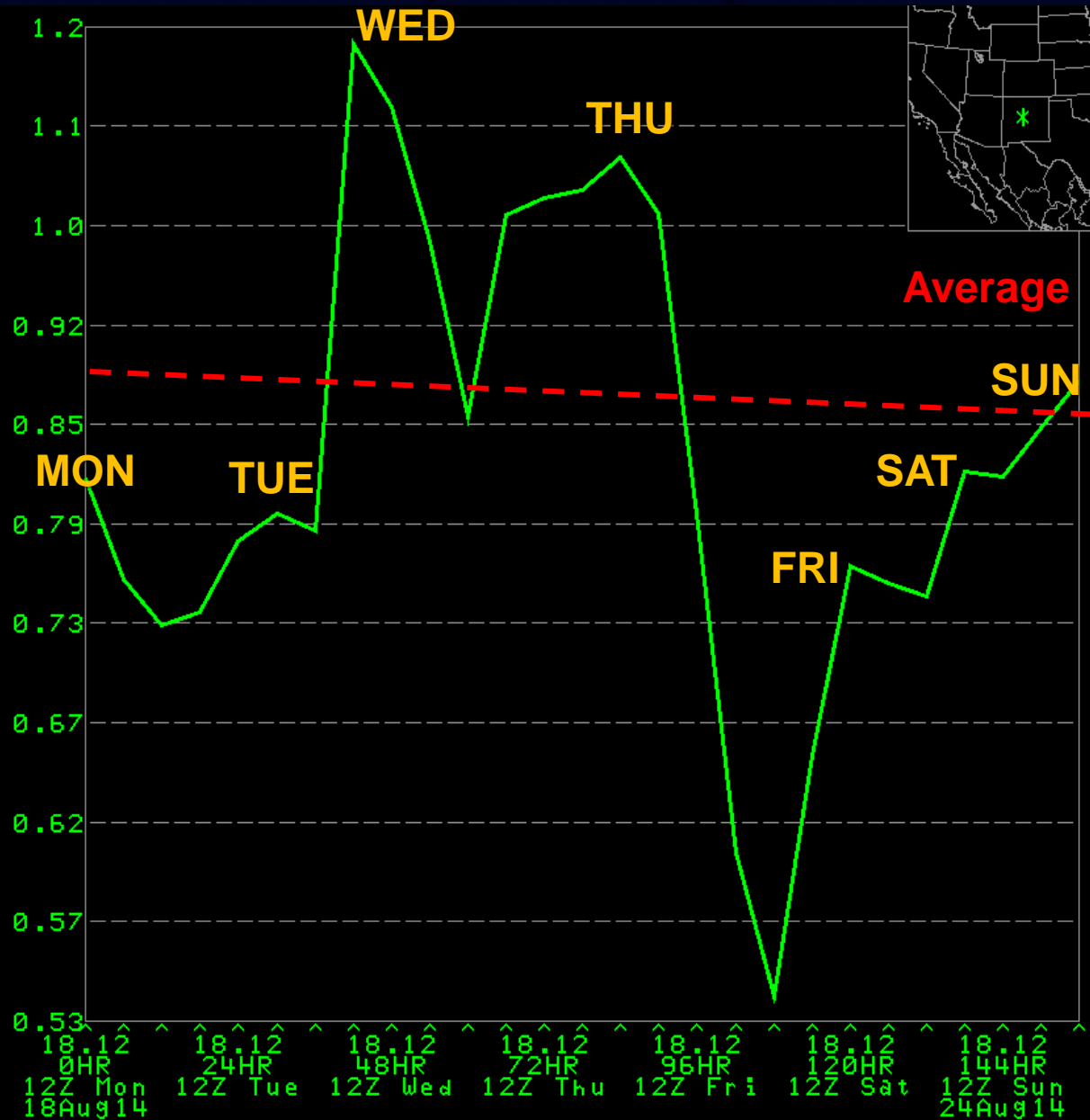
Weekly Weather Briefing

Forecast Details



Precipitable Water (Moisture) Trends

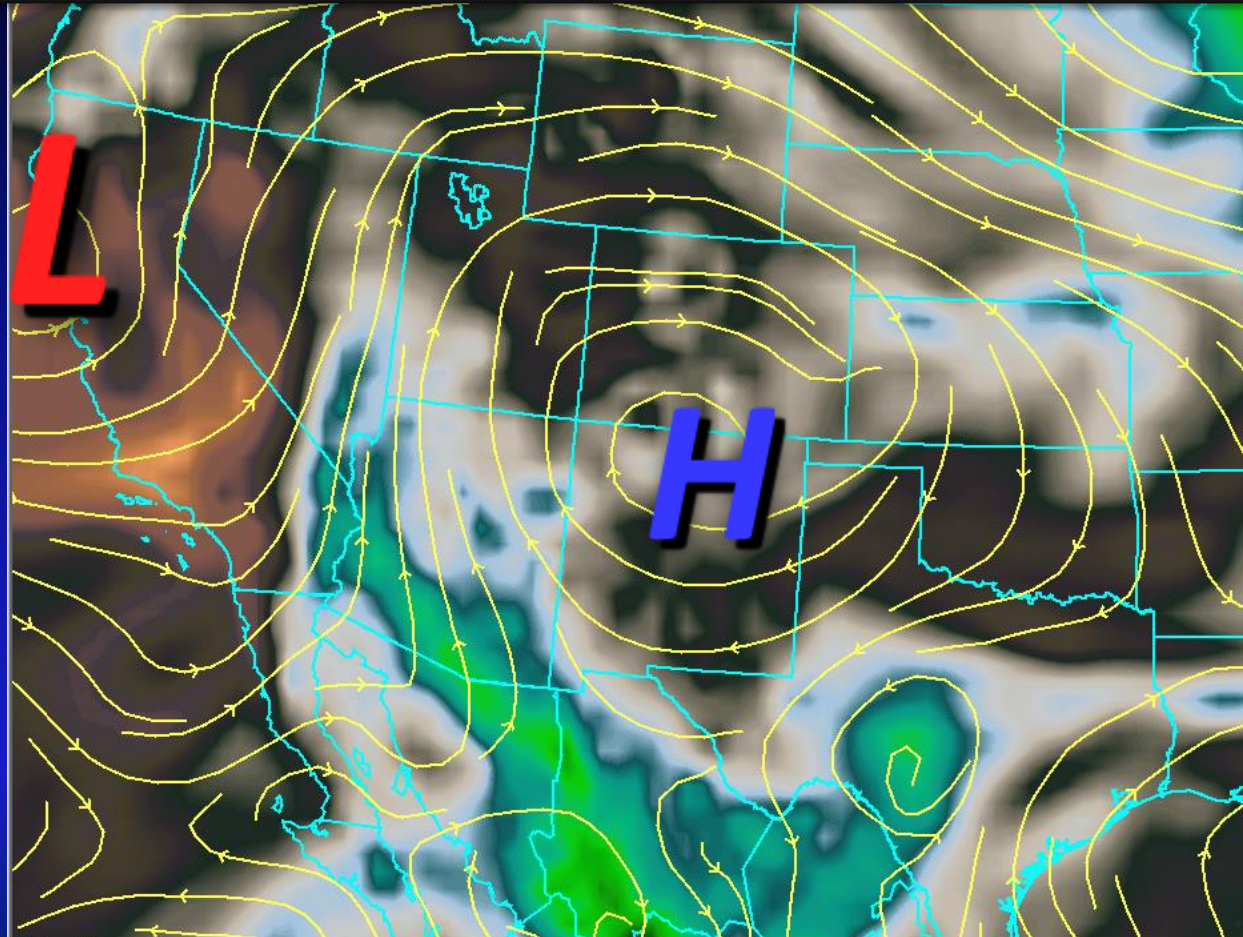
Precipitable water, measured in inches, is the depth of water in a column of the atmosphere if all the water in that column were precipitated as rain.



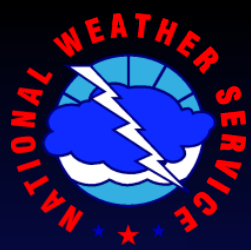


Upper Level Forecast Chart (Image is Moisture)

Tonight

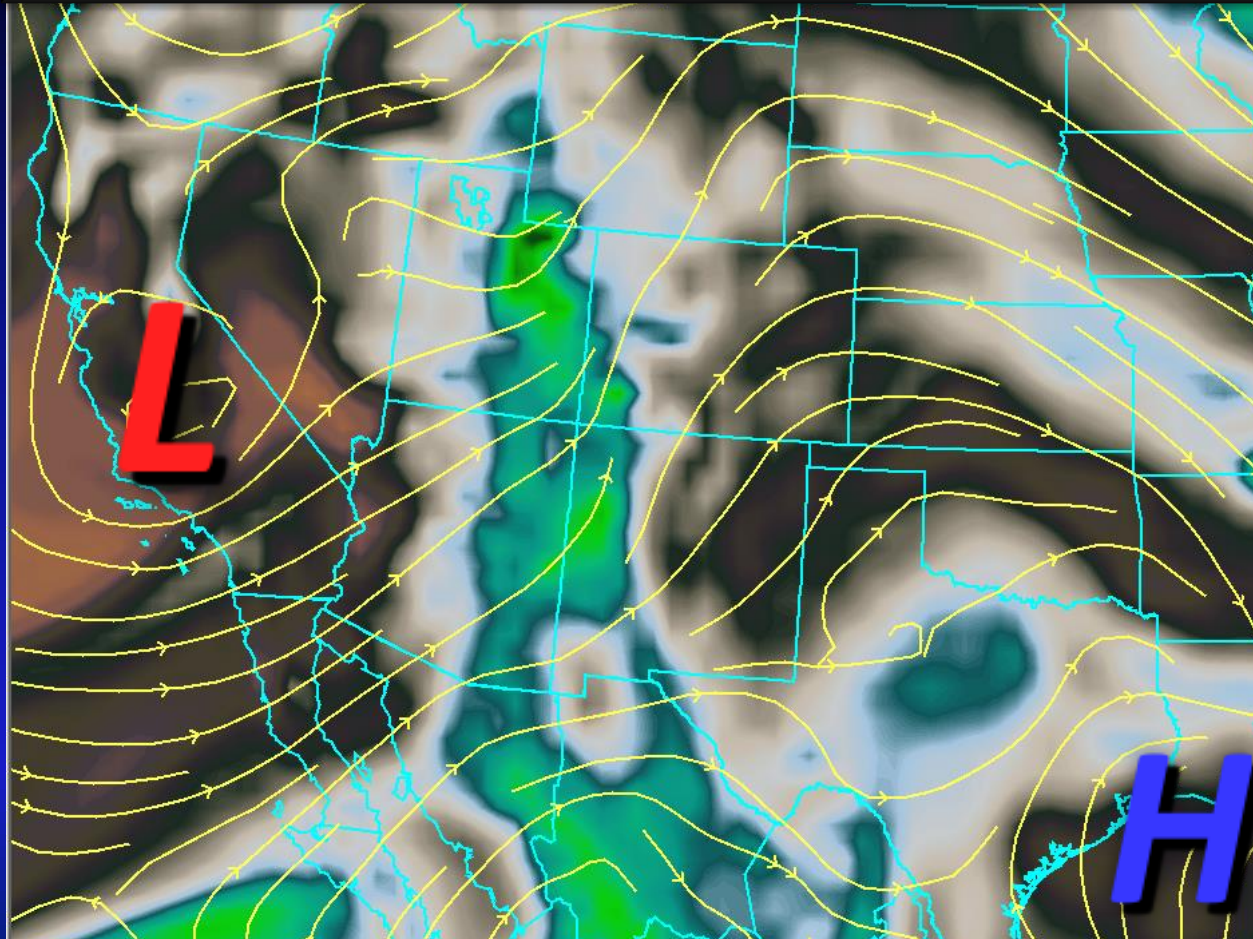


Tonight: Upper high slowly shifting eastward, centered over northern NM. Steering winds generally from the east or southeast, but very weak especially central and northern NM. Note main moisture plume directed into AZ.



Upper Level Forecast Chart (Image is Moisture)

Tuesday

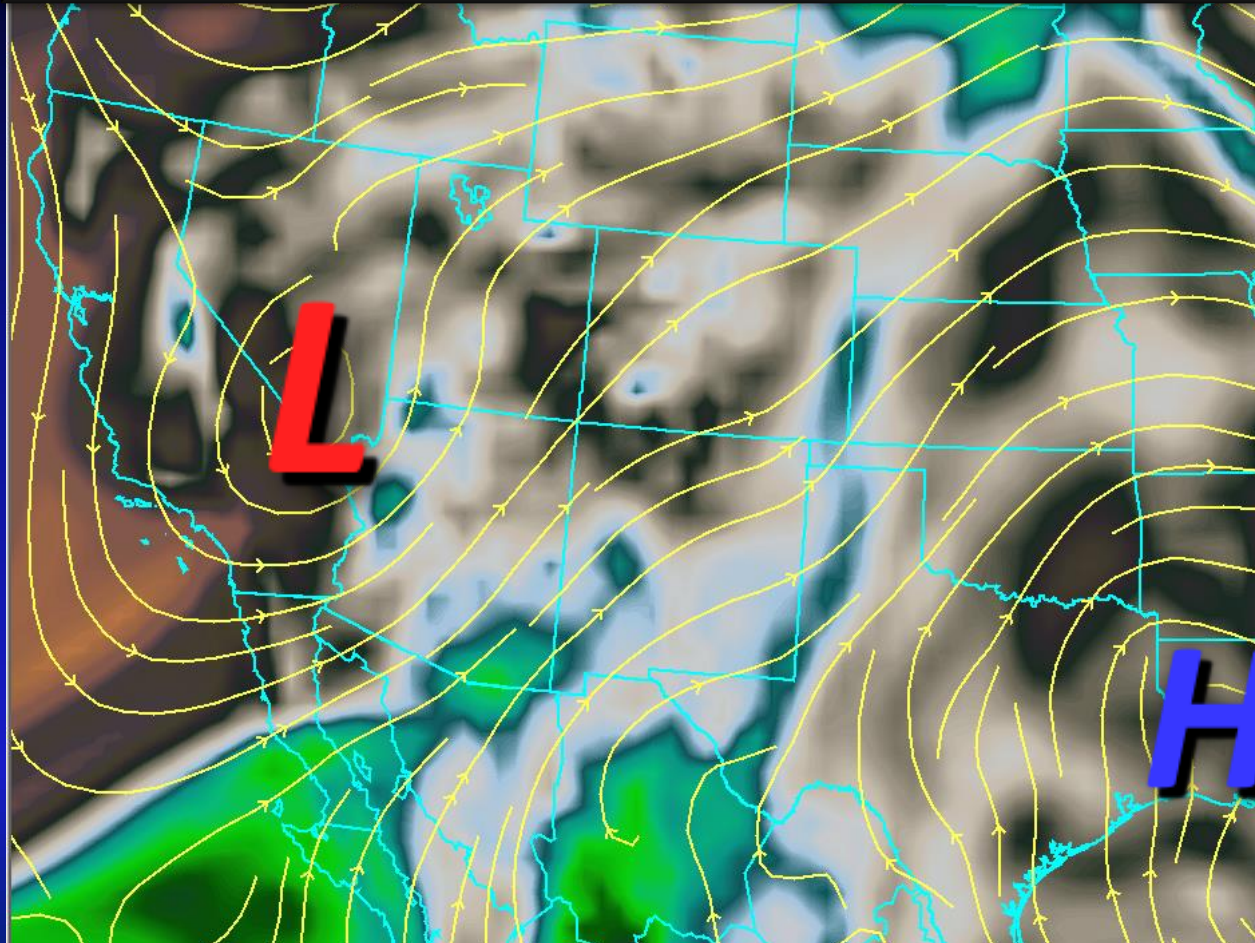


Tuesday: Significant pattern transition. Upper high to relocate to the Gulf Coast region, while an upper low sinks south along the CA coast. Deeper moisture to advance north and east mainly across the western 1/3 of NM.



Upper Level Forecast Chart (Image is Moisture)

Wednesday

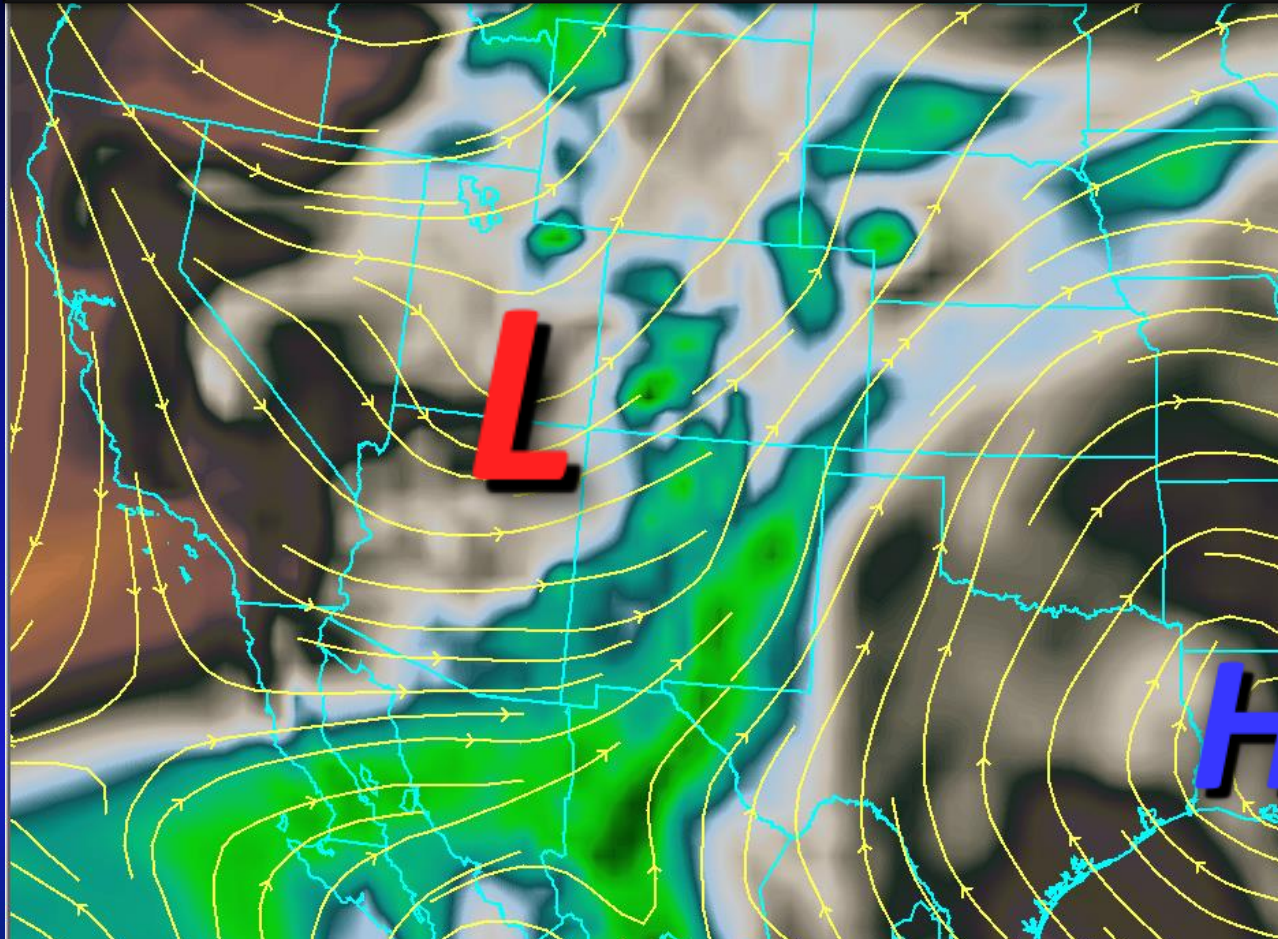


Wednesday: Deep-layered moisture to continue flowing northward with high pressure aloft centered well to the east and low pressure slowly lifting NE from southern CA. Still uncertainty on track of the low.



Upper Level Forecast Chart (Image is Moisture)

Thursday

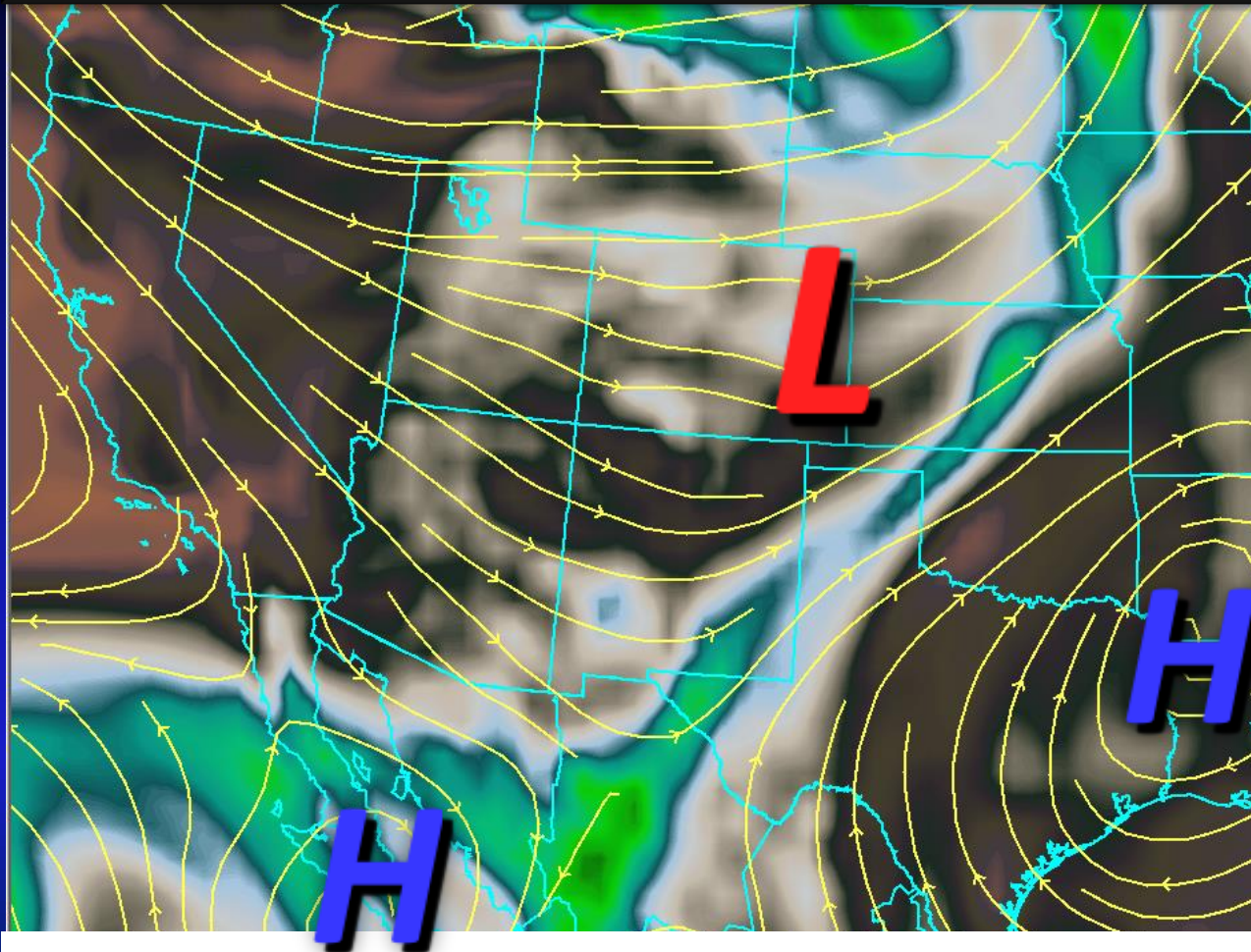


Thursday: Potentially wet! Most active day of the week with widespread shower activity especially central and western NM. Coverage of intense thunderstorms may be limited across the west due to extensive cloud cover, cooler temps.



Upper Level Forecast Chart (Image is Moisture)

Friday



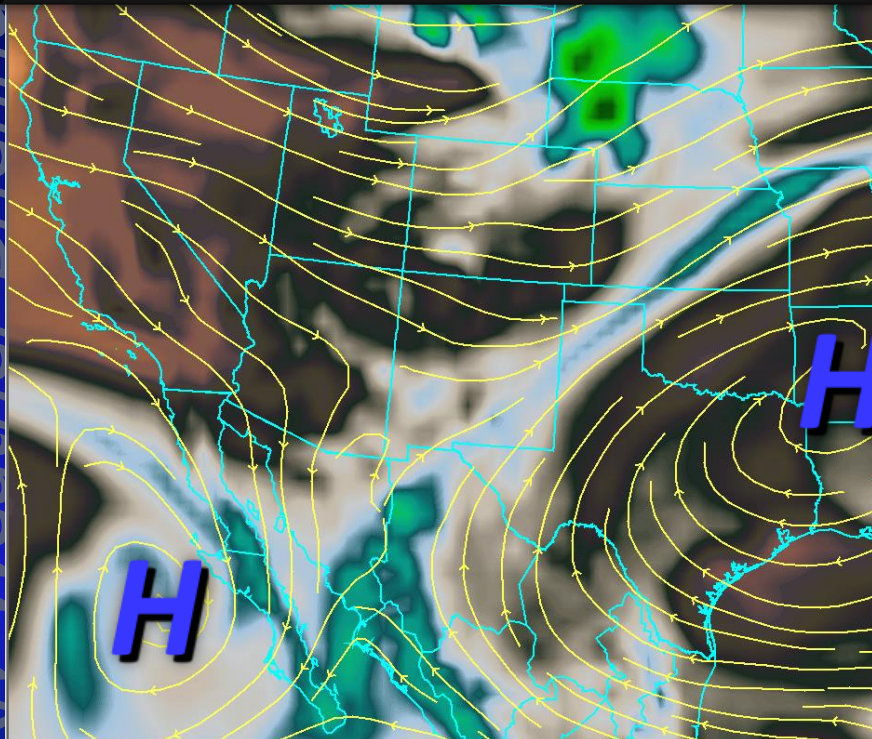
Friday: Deepest moisture looks to get directed farther east over the eastern half of NM. Remnants of low pressure system to scoot over the region during the day. Less active north?



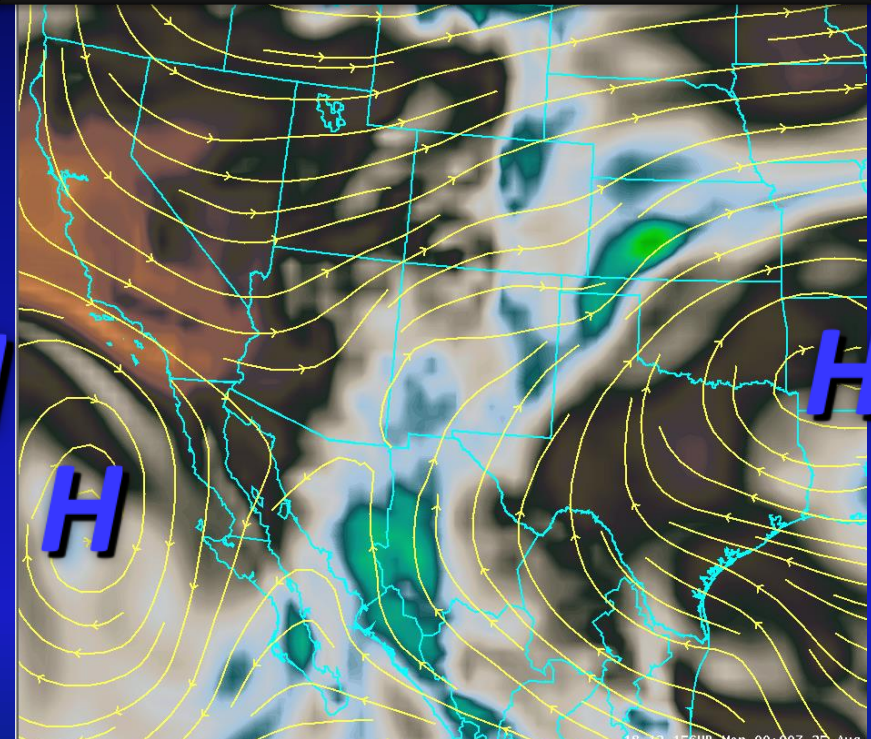
Upper Level Forecast Chart (Image is Moisture)

Weekend Outlook

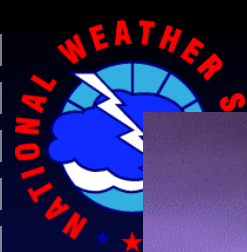
Saturday



Sunday



Weekend: Latest extended forecast charts suggest a little drier air working into the northern part of the area with best moisture focused over the east. Sunday has been trending more active of the two days.



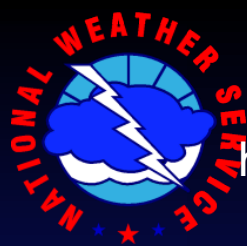
Burn Scar Thunderstorm Threat Matrix

<u>Burn Scar</u>	Today	Tuesday	Wednesday	Thursday	Friday
Assayii Lake	Slight	High	Moderate	Moderate	Slight
Diego	Slight	Moderate	High	High	Slight
Jaroso	Slight	Moderate	Moderate	Moderate	Slight
Las Conchas	Slight	Moderate	Moderate	Moderate	Slight
Little Bear	Slight	Moderate	Moderate	Moderate	Slight
Pacheco	Slight	Moderate	Moderate	Moderate	Slight
Thompson Ridge	Slight	Moderate	High	Moderate	Slight
Tres Lagunas	Moderate	Moderate	Moderate	Moderate	Slight
White	Slight	Slight	Moderate	Moderate	Slight
Whitewater-Baldy	Moderate	High	Moderate	High	Slight

Table indicates probability for thunderstorms. This product is for planning purposes only. Refer to the latest bulletins from the NWS concerning immediate threats for flash flooding.

None = 0%	Slight = 10-30%
Moderate = 40-60%	High = 60% +

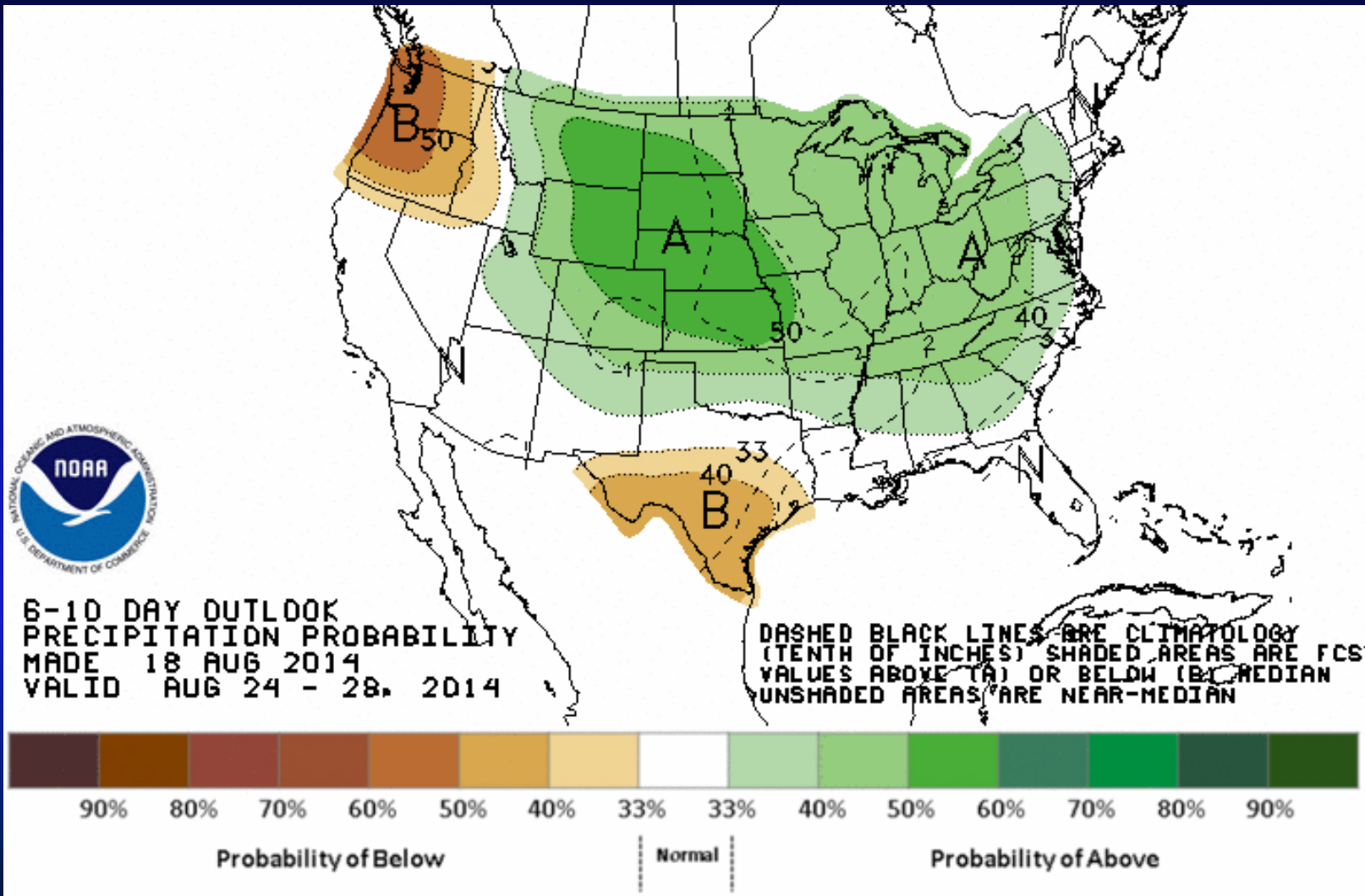


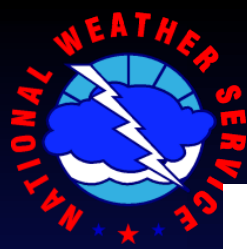


6-10 Day Precip Outlook: Aug 24-28

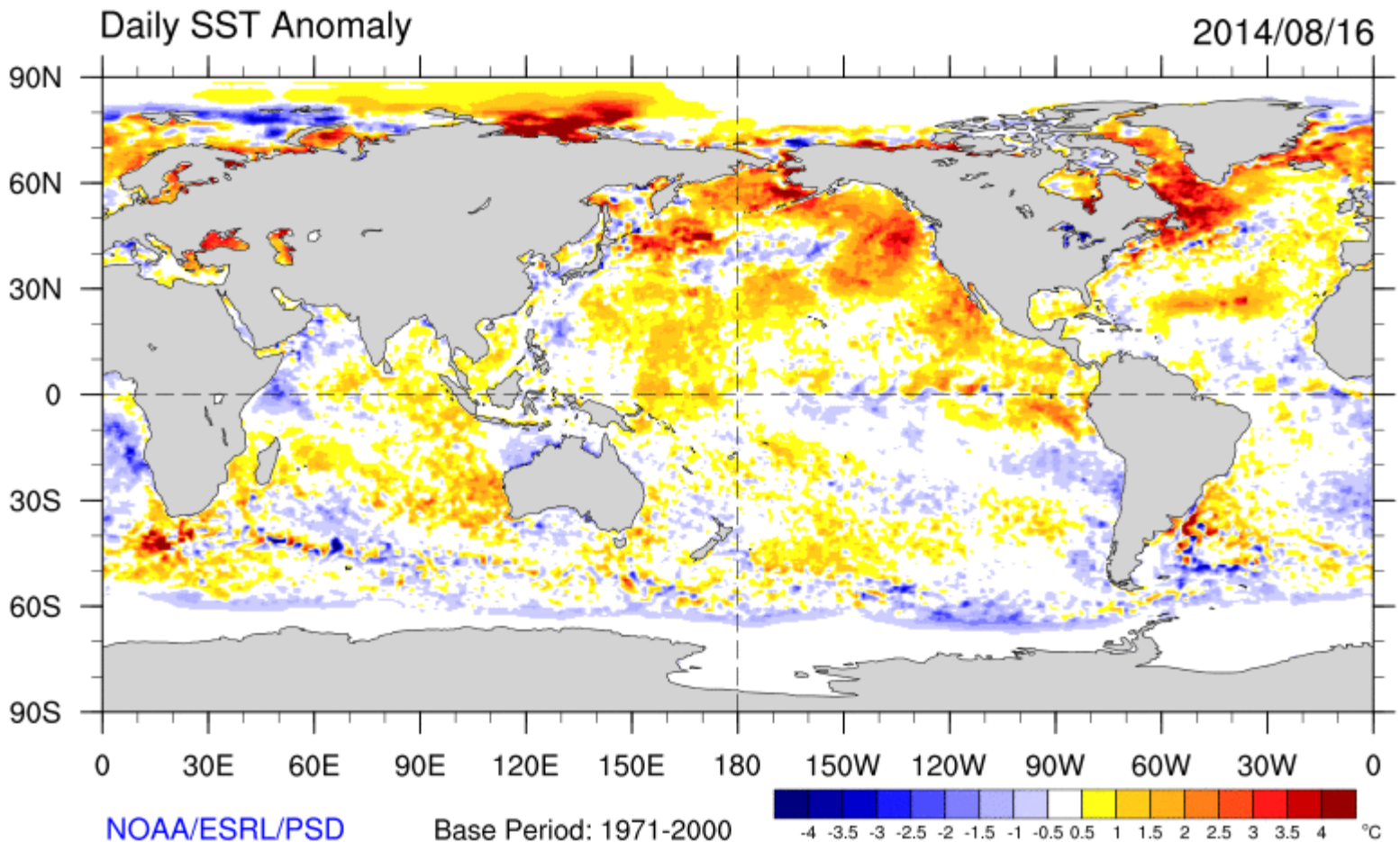
<http://www.cpc.ncep.noaa.gov/products/predictions/610day/610prcp.new.gif>

Weekly Weather Briefing





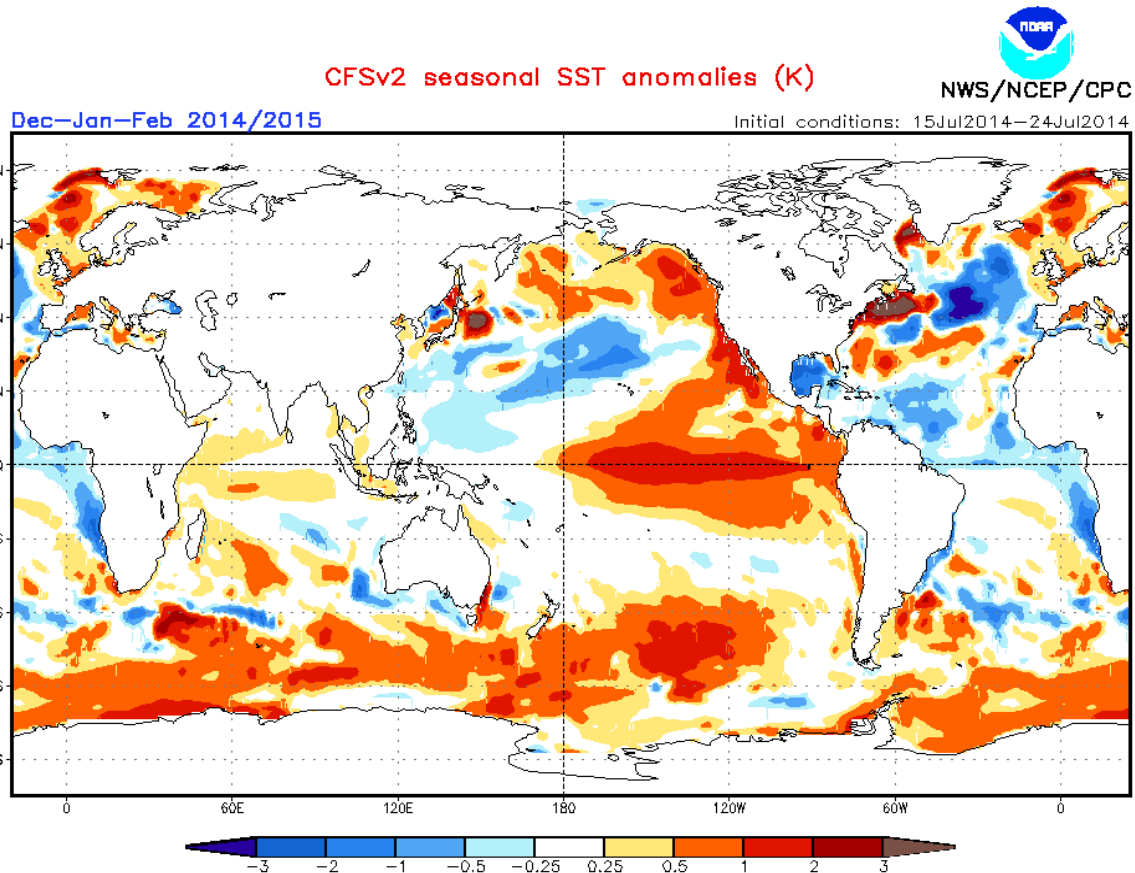
Daily Global SST Anomalies as of 8/16/14



Note the lack of typical El Niño signature along eastern Equatorial Pacific. A positive PDO continues, however, which often results in above average precipitation for central and northern NM for Autumn and Winter.



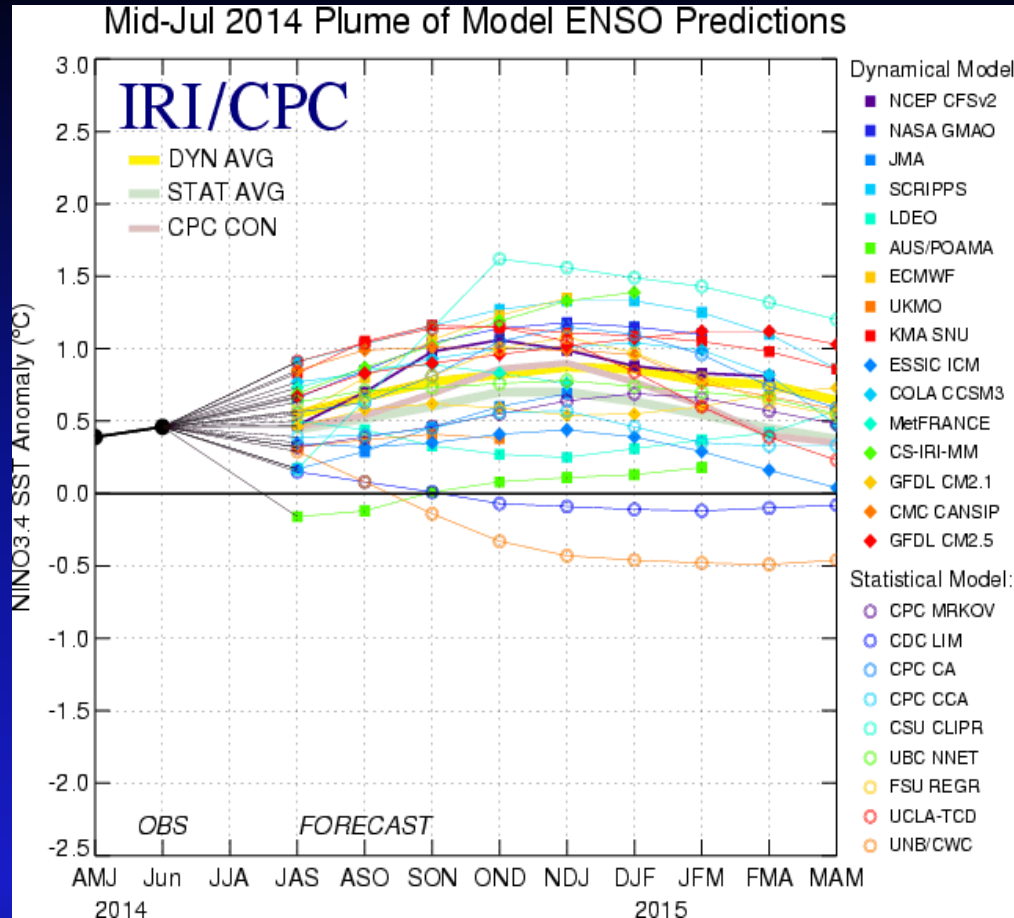
Dec 2014 thru Feb 2015 SST Forecast from Climate Prediction Center (CPC)



CPC's model continues to indicate a weak to moderate El Niño during winter 2014-2015.



IRI/CPC Pacific Niño 3.4 SST Model Outlook



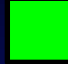



Vast majority of models favor El Niño (greater than or equal to +0.5°C) to develop in the next several months and persist through Northern Hemisphere winter 2014-15.



Week at Glance

-  **Tonight** (T-storms, locally heavy rain)
-  **Tuesday** (Elevated FF Threat)
-  **Wednesday** (Elevated FF Threat)
-  **Thursday** (Elevated FF Threat NC/NE)
-  **Friday** (Isold-Sct T-storms)
-  **Weekend** (Isold-Sct T-storms, focus south)

Hazards & Impacts

-  None
-  Minor
-  Significant
-  Major

SYNOPSIS: A pattern change is expected to bring more active and widespread thunderstorms to western and central New Mexico Tuesday and Wednesday, while the east should see more activity Tuesday into Thursday. High temperatures will fall below average mid to late week as the region wets up. However, increasing model variability is eroding confidence in the duration of the wetter pattern and some drying could occur sooner than currently anticipated. Model differences continue to impact the upcoming weekend forecast, with indications for either a wet or drier Saturday and Sunday.

AMBASSADOR™

WRN

WEATHER-READY NATION



We Need YOU...

WRN Ambassadors are change agents and leaders of their communities. You will inspire others to be better informed and prepared – helping to minimize or even avoid the impacts of natural disasters.

The Ambassador's badge signifies your commitment as a trusted partner in building community resilience in the face of increasing vulnerability to extreme weather and water events.

Newest WRN Ambassadors:

- City of Clovis
- City of Albuquerque
- Valencia County OEM
- Los Alamos National Lab
- UNM



- Any organization across all levels of government, businesses large and small, non-profit and non-governmental organizations, and academia can become WRN Ambassadors. A broadcast meteorologist who advocates weather preparedness on-air
- Contact Kerry Jones directly for application info.



As always...

Stay up to date...

- ▶ weather.gov/abq
- ▶ Facebook
- ▶ @NWSAlbuquerque & #nmwx
- ▶ NOAA Weather Radio
- ▶ Favorite Media Outlet
- ▶ mobile.weather.gov
- ▶ NMroads.com