



Phone:
 Espanola 505-753-2105
 Cuba 575-289-3241
 Jemez Springs 575-829-3550

Electric Cooperative, Inc.
 P.O. Box 128, Espanola, New Mexico, 87532

Managing Tree Growth for a Healthy Electric System

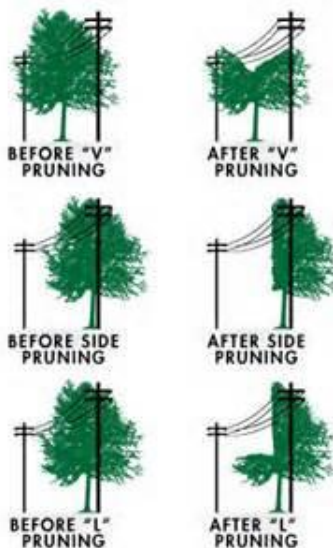
Trees and power lines don't mix. When trees come in contact with power lines they become a hazard. NOT GOOD!!! JMEC's goal is to completely clear the power line right-of-ways. We need everyone's cooperation to provide safe and reliable power. By allowing JMEC access to trees that are in the right-of-way and allowing tree removal it will help maintain these lines effectively and affordably. Together we can proactively reduce the cost and increase ALL OUR SAFETY by managing tree growth within the power line right-of-way.

Tree Trimming:

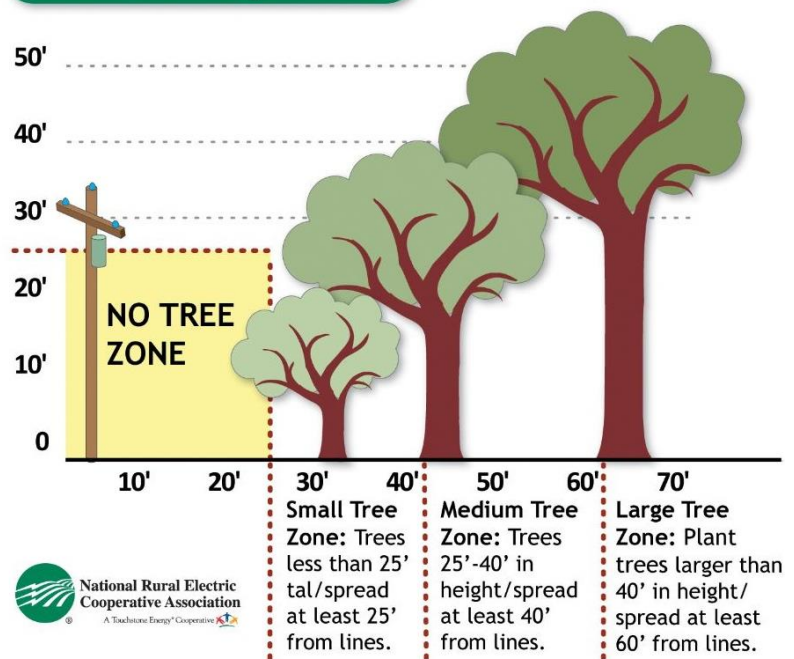
JMEC's approach on tree trimming is to trim all trees within the right-of-way that may come in contact with power lines. Remembering, in overly populated areas the most effective approach may be to cut the tree down. This will help avoid future growth and repetitive cost. JMEC will make every effort to limit tree removal were possible. In cases where tree are trimmed, the removal of branches may cause an unappealing look, but this method will keep the branches from growing back into the line while allowing the tree to stay within the right of way.

JMEC currently has contractor crews working in the **Hernandez, Chile, Jacona and Dixon** areas.

We also have crews working on individual problem areas that are reported by consumers. For further information check us out via our website www.jemezcoop.org, like us on Facebook or listen for our radio spots to get the latest updates or changes.



Tree Planting Guide



JMEC crews are equipped with wood chippers. All debris will be chipped and hauled away from your property, unless otherwise arranged. If you would like wood chips, please contact our vegetation management coordinator, Lenny Ortiz at 505-927-8549.

If you have questions or concerns about trees or would like to report dangerous tree conditions please contact our office at 1-505-753-2105 or 1-888-755-2105. After hours, 24/7 you may call our automated system and leave a message with your contact information at 1-877-753-0095. You may also contact us by email: Lenny Ortiz, Vegetation Management Coordinator lortiz@jemezcoop.org or Carmen Campbell, Director of Member Services ccampbell@jemezcoop.org.